

Strangford Lough N

► PROPEL



2369 sq. ft.

Main Floor: 1040 sq. ft.
Upper Floor: 1329 sq. ft.

- 2 storey, 2369 sqft
- 3 beds, 2.5 baths
- 9' main floor
- Main floor den
- Upper floor family room
- Upper floor laundry
- Master suite with a 5pce ensuite and walk in closet
- Large mud room closet
- Walk through pantry



Contemporary Elevation



Craftsman Elevation



Farmhouse Elevation



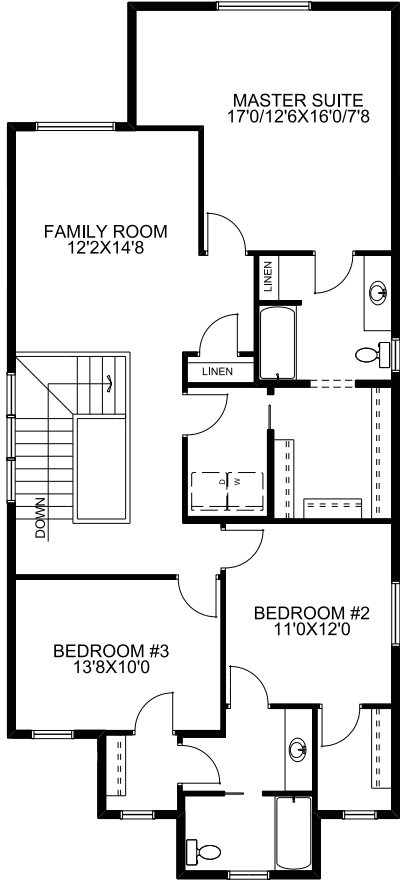
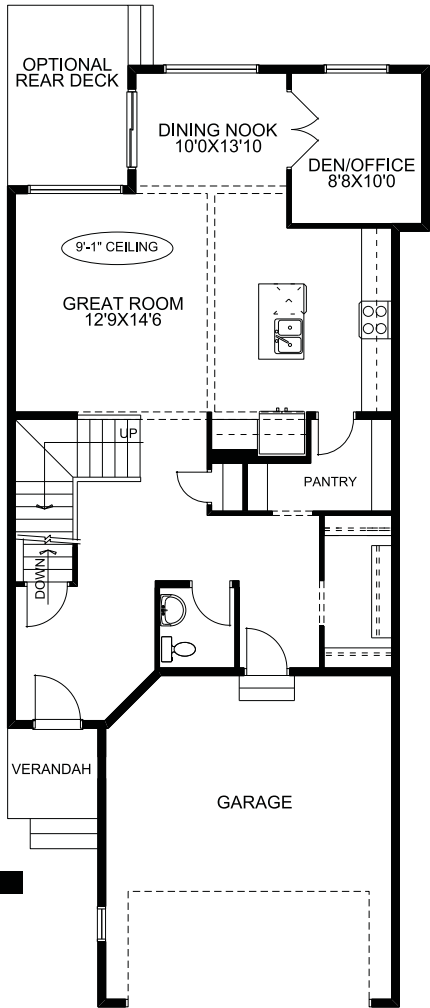
Prairie Elevation



Tudor Elevation

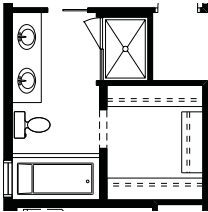
Main Floor

Upper Floor



Main Floor w/opt. fireplace

Upper Floor w/opt. ensuite



McKEE HOMES

Your family home. Our family business.

*Marketing square footages. Available elevations are area dependant.

**Plans subject to change. Please consult your sales person for details.