

Lough Neagh VI



1822 sq. ft.

Main Floor: 830 sq. ft.
Upper Floor: 992 sq. ft.

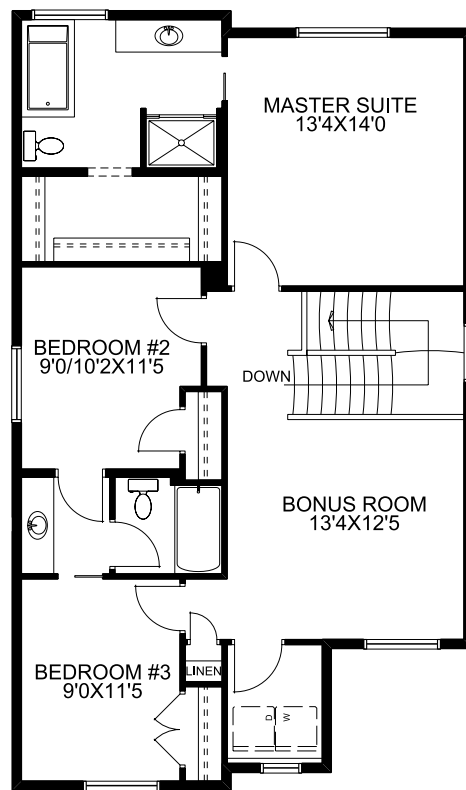
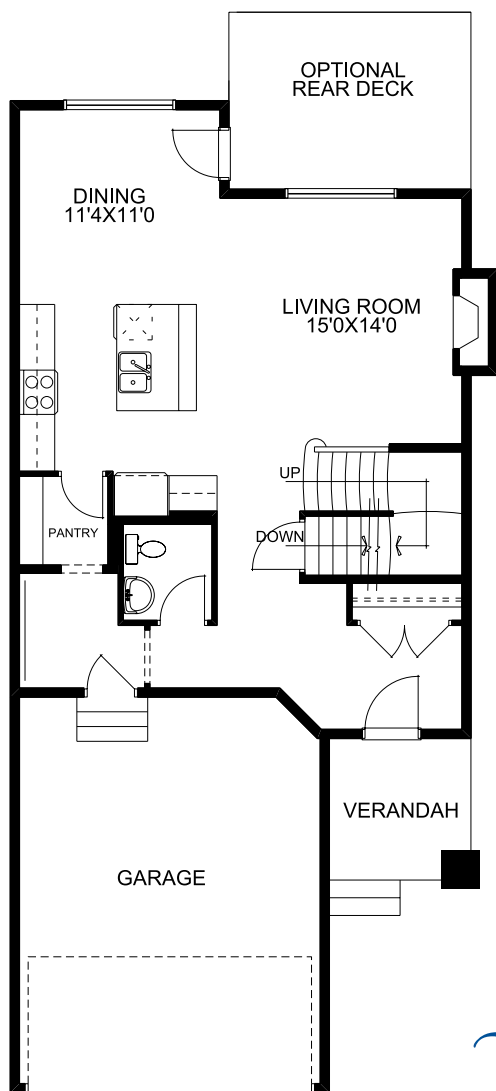
- 2 Storey, 1822 sq. ft.
- 3 bedrooms, 2.5 bathrooms
- Kitchen with central island and walk through pantry
- Living room with gas fireplace
- 2nd and 3rd bedrooms feature a Jack & Jill bathroom
- Upper floor bonus room
- Master retreat with a 4 piece ensuite and spacious walk in closet
- Upper floor laundry



Front Elevation

Main Floor

Upper Floor



McKEE HOMES

Your family home. Our family business.

403-948-6595 • mckeehomes.com

*Plans subject to change. Please consult your sales person for details.