



2120 sq. ft.

Main Floor: 866 sq. ft.
3 Bedroom Upper Floor: 1137 sq. ft.
4 Bedroom Upper Floor: 1254 sq. ft.

- Two storey
- 3 or 4 bedrooms, 2.5 baths
- Upper floor laundry
- 9.0' ceilings main floor
- Walk through pantry
- Spacious living room
- Master suite featuring a walk-in closet and ensuite
- Front foyer closet
- Large central upper floor bonus room



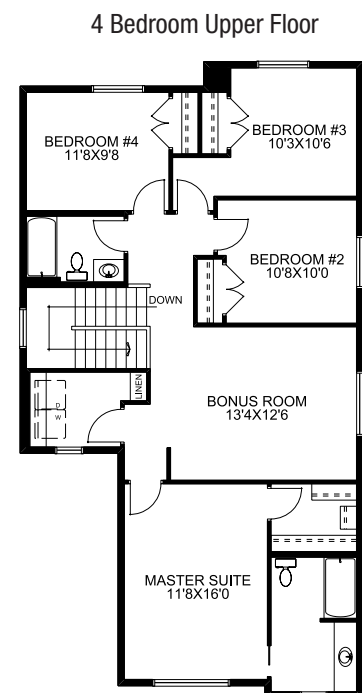
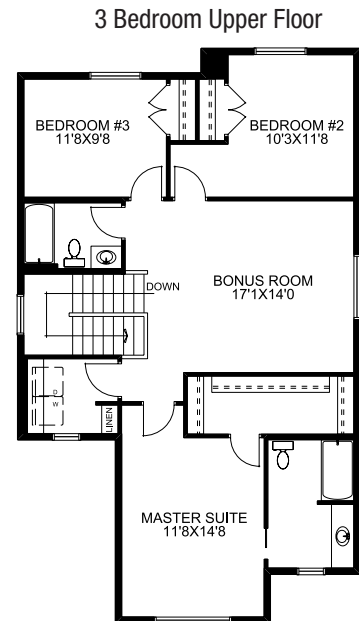
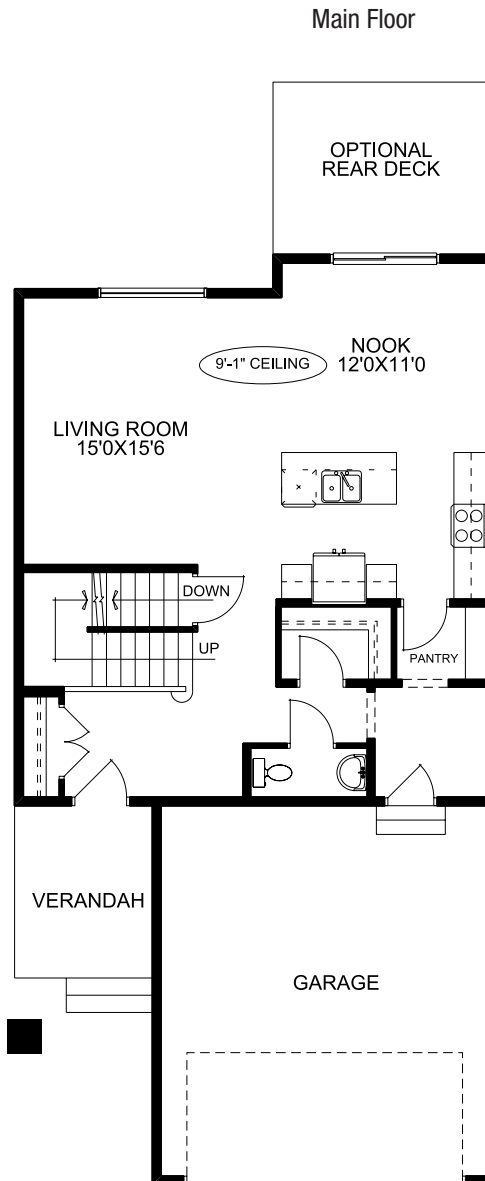
Craftsman



Prarie



Tudor



McKEE HOMES

Your family home. Our family business.