



# STRATFORD

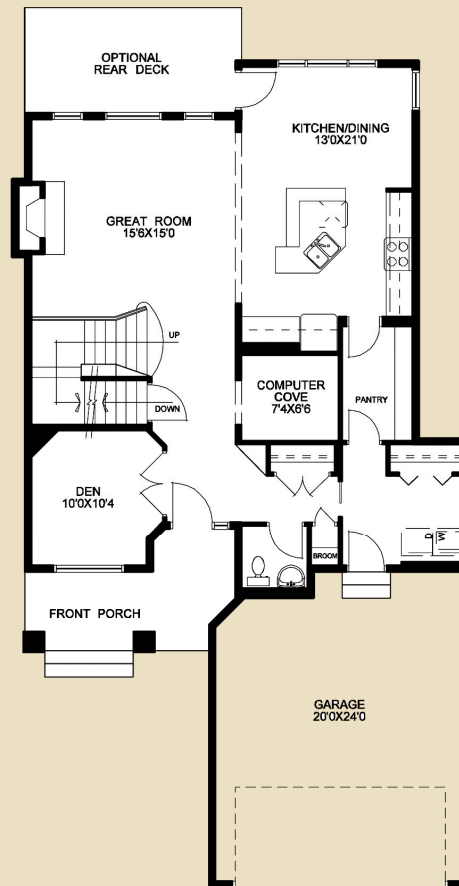
## THE STRATFORD

ARTIST'S RENDERING. MAY NOT BE EXACTLY AS SHOWN

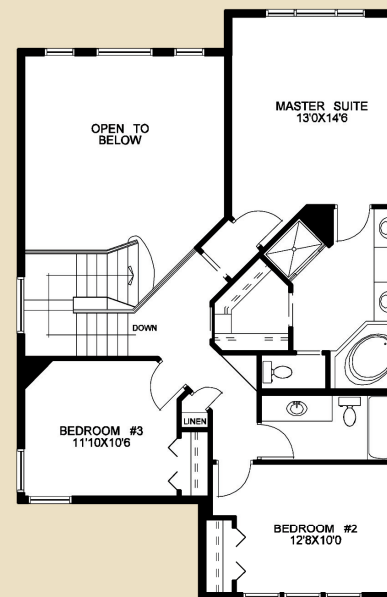
French country flair!

- Two storey, 2024 square feet
- 3 bedrooms, 2½ bathrooms
- Optional upper bonus room plan (+251 sq. ft.)
- Soaring 18' ceilings in great room with gorgeous window feature; 9' ceilings through rest of main floor
- Stunning fireplace feature in great room
- Kitchen features large central island with eating bar and generous walk-through pantry to laundry and mudroom
- Main floor den with double French doors, plus central main floor computer alcove
- Spacious 4-piece master ensuite features his and hers vanities, private toilet, deluxe soaker tub and generous walk-in closet

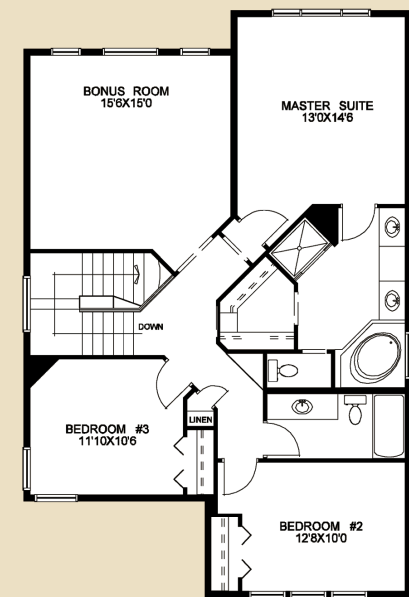
<b>MAIN FLOOR</b>	<b>1139 SQ. FT.</b>
<b>UPPER FLOOR</b>	<b>885 SQ. FT.</b>
<b>TOTAL</b>	<b>2024 SQ. FT.</b>
<b>GARAGE</b>	<b>462 SQ. FT.</b>



MAIN FLOOR



UPPER FLOOR



UPPER FLOOR w/ BONUS ROOM  
+251 SQ. FT.

[www.mckeehomes.com](http://www.mckeehomes.com)

The best is built in.

Master Builder  
**MCKEE HOMES**