



# LOUGH NEAGH

## THE LOUGH NEAGH

ARTIST'S RENDERING. MAY NOT BE EXACTLY AS SHOWN

- Two storey, 2417 square feet
- Choose from four elevations
- 3 bedrooms, 2½ bathrooms
- Vaulted upper bonus room, plus tech centre/toy storage
- 9' ceilings on main floor
- Gas fireplace in living room
- Kitchen features central island with eating bar and walk-through pantry to mudroom
- Main floor den/office with double archways
- Generous master suite features spacious 4-piece ensuite with his and hers vanities, large shower and soaker tub, linen shelves and large walk-in closet
- Upper floor laundry

MAIN FLOOR	1088 SQ. FT.
UPPER FLOOR	1329 SQ. FT.
TOTAL	2417 SQ. FT.
GARAGE	402 SQ. FT.



CRAFTSMAN ELEVATION



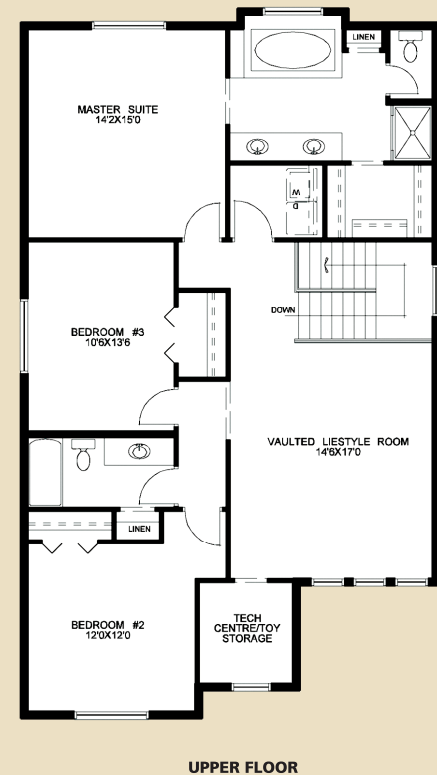
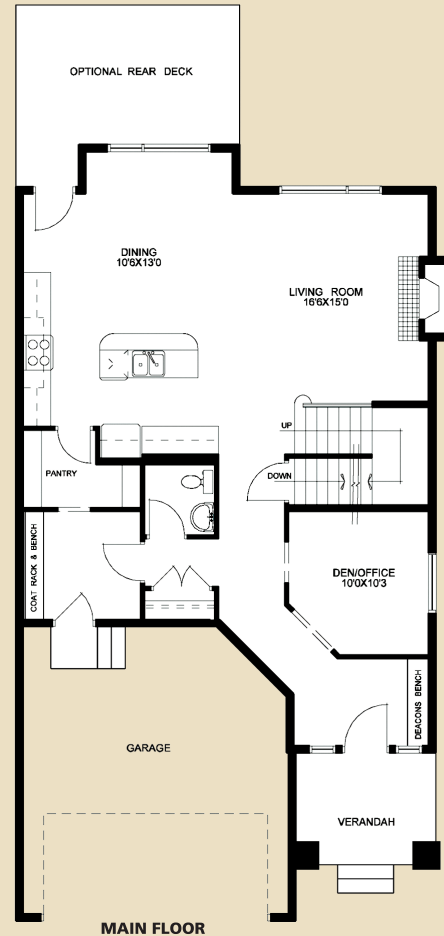
FRENCH ELEVATION



PRAIRIE ELEVATION



TUDOR ELEVATION



[www.mckeehomes.com](http://www.mckeehomes.com)

The best is built in.

Master Builder  
**McKEE HOMES**