

Ashbourne

1537 sq. ft.

Main Floor: 781 sq. ft.
Upper Floor: 756 sq. ft.

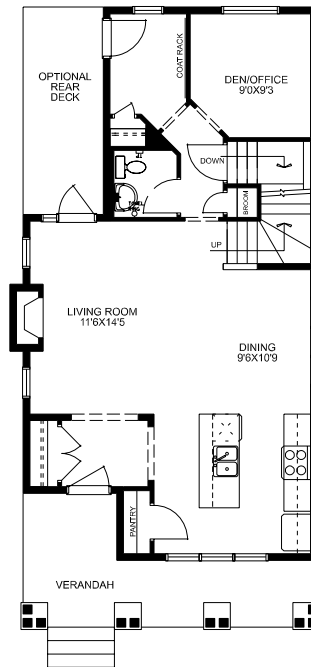
- 2 storey, 1537 sq. ft.
- Prairie elevation
- 3 bedrooms, 2.5 baths
- Gas fireplace in living room
- Kitchen feat. centre island with eating bar, plus pantry

- Main floor office/den
- Master suite feat. generous walk-in closet, plus 3-piece ensuite
- Upstairs laundry

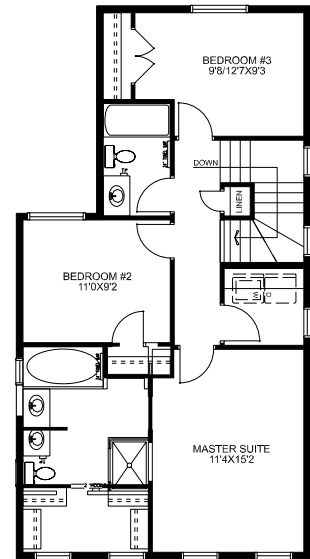


Prairie Elevation

Main Floor



Upper Floor



McKEE HOMES

Your family home. Our family business.

*Plans subject to change. Please consult your sales person for details.

403-948-6595 • mckeehomes.com