

Strangford Lough



2485 sq. ft.

Main Floor: 1123 sq. ft.
Upper Floor: 1362 sq. ft.

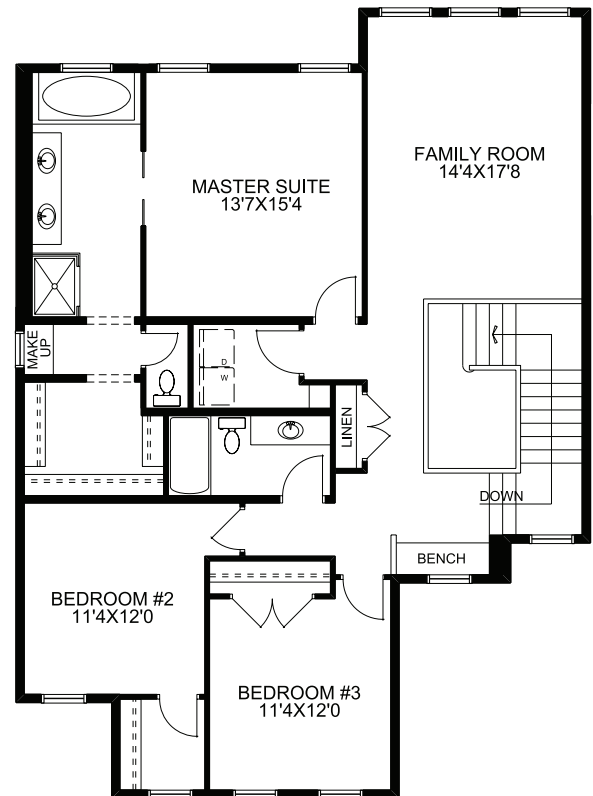
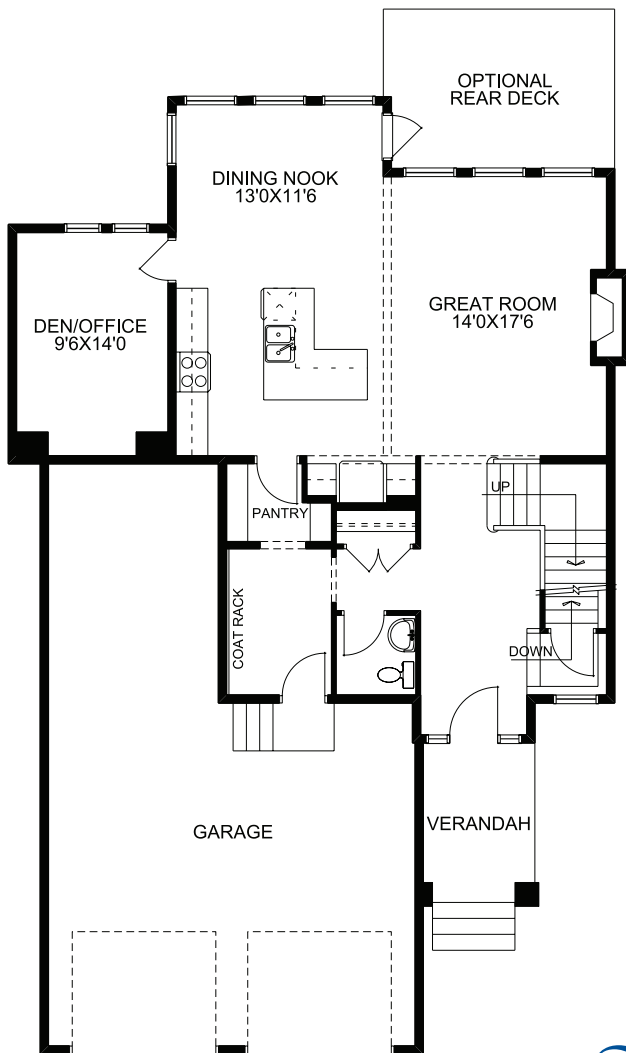
- 2 storey, 2485 sq. ft.
- 3 bedrooms, 2.5 baths
- Kitchen with centre island & eating bar
- Walk-through pantry
- Gas fireplace in great room
- Main floor den/office
- Spacious upper floor lifestyle room
- Master suite with 5-piece ensuite & large walk-in closet
- Upper floor laundry



Front Elevation

Main Floor

Upper Floor



McKEE HOMES

Your family home. Our family business.

403-948-6595 • mckeehomes.com

*Plans subject to change. Please consult your sales person for details.