



1236 sq. ft.

Main Floor: 1236 sq. ft.
Opt Lower Dev: 915 sq. ft.

- Bungalow, 1236 sq. ft.
- 2 bedrooms, 2 baths
- 4 bedrooms, 3 baths with optional lower development
- Kitchen feat. island with eating bar and walk-in pantry
- Versatile plan with kitchen, dining and master ensuite options
- Master suite feat. walk-in closet and 3 or 4-piece ensuite
- Main floor laundry



Alpine Elevation



Colonial Elevation



Craftsman Elevation



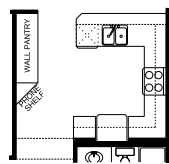
English Cottage Elevation



Prairie Elevation



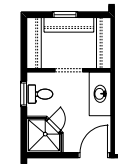
Tudor Elevation



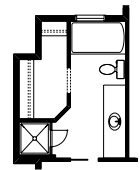
Kitchen Option



Dining Option



Ensuite Option 1



Ensuite Option 2



McKEE HOMES

Your family home. Our family business.