

# Strangford Lough IV



2562 sq. ft.

Main Floor: 1116 sq. ft.  
Upper Floor: 1446 sq. ft.

- 3 and 4 bedroom upper floor plan
- 10' main floor ceilings
- Main floor den
- Great room with a gas fireplace
- Large kitchen with a central island and walk through pantry
- Upper floor laundry
- Master bedroom with a 5 pce ensuite and walk in closet



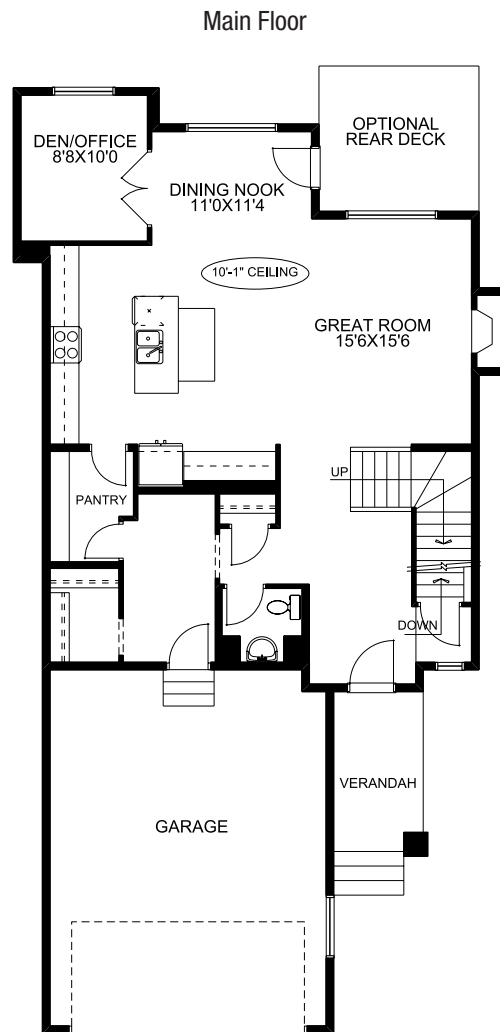
Craftsman Elevation



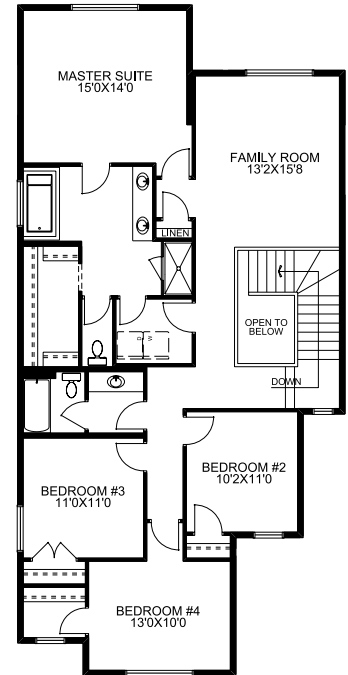
Prairie Elevation



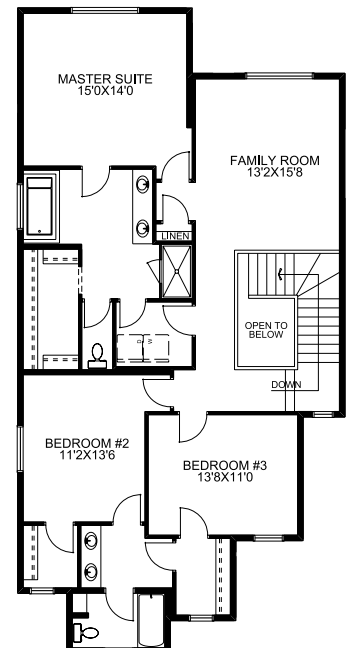
Tudor Elevation



Upper Floor



Optional 3-Bedroom Upper Floor



**McKEE HOMES**

Your family home. Our family business.

403-948-6595 • mckeehomes.com

\*Plans subject to change. Please consult your sales person for details.