

# Carlingford R Tandem



2555 sq. ft.

Main Floor: 1081 sq. ft.  
Upper Floor: 1474 sq. ft.

- 2 Storey, 2555 sq. ft.
- 4 bedrooms, 2.5 bathrooms
- Main floor den
- Living room with gas fireplace
- Upper floor lifestyle room
- Spacious kitchen with central island and walk through pantry
- Master retreat with 5 piece ensuite and large walk in closet



Craftsman Elevation

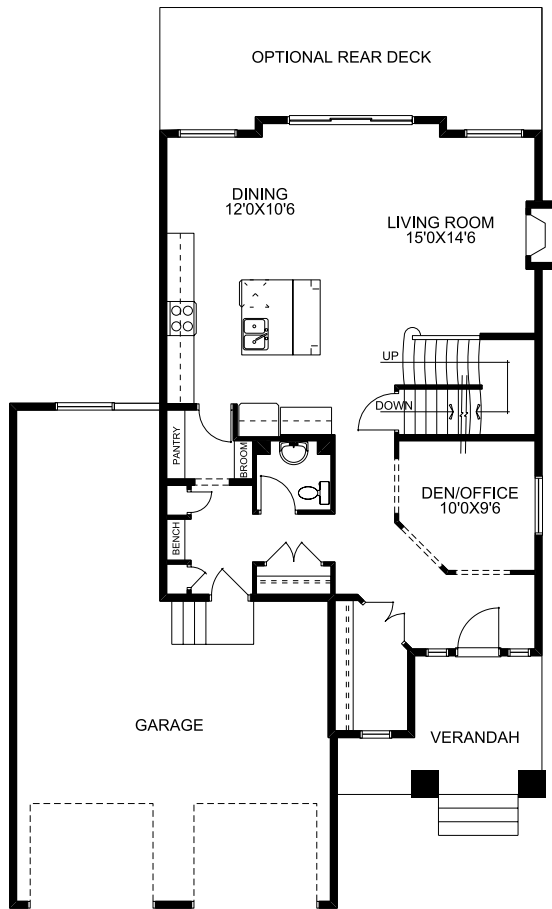


Prairie Elevation

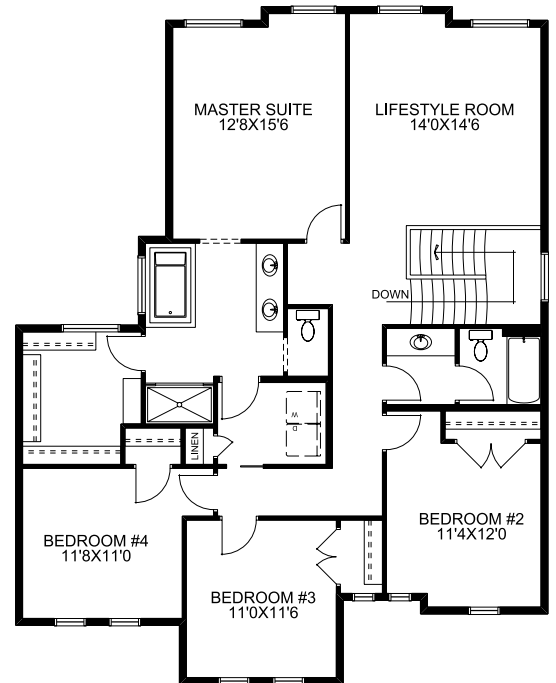


Traditional Elevation

Main Floor



Upper Floor



**McKEE HOMES**

Your family home. Our family business.

403-948-6595 • [mckeehomes.com](http://mckeehomes.com)

\*Plans subject to change. Please consult your sales person for details.